

A Whole New World

from Disney's Aladdin

arranged by Brian Roberts

$\text{♩} = 125$

Men

Women

Piano

Electric Guitar

Bass Guitar

Drumset

I can show you the world

Dadd9



7

M. 

shin - ing shim-er-ring splen - did tell me prin - cess now when did you last let your heart de - cide

W. 

Pno. 

El. Guit. 

B. Guit. 

D. Set 

D GΔ/B A/C# Em/G F# F#/A# Bm Bm/A G

Bm A



M. I can o - pen your eyes Take you won - der by won - der o - ver side - ways and un - der on a

W.

Pno. Dadd9 D GΔ/B A/C# Em/G F# F#/A# Bm Bm/A

El. Guit. D/F# Bm A

B. Guit.

D. Set



19

M.
 8 ma-gic car - pet ride a whole new world a new fan - tas - tic point of view no one to

W.

Pno.
 G Dadd9 A A/C# D A A7 D

El. Guit.
 8

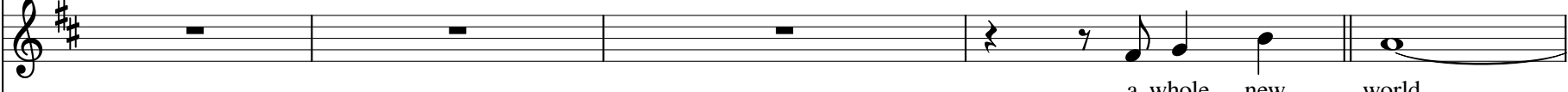
B. Guit.

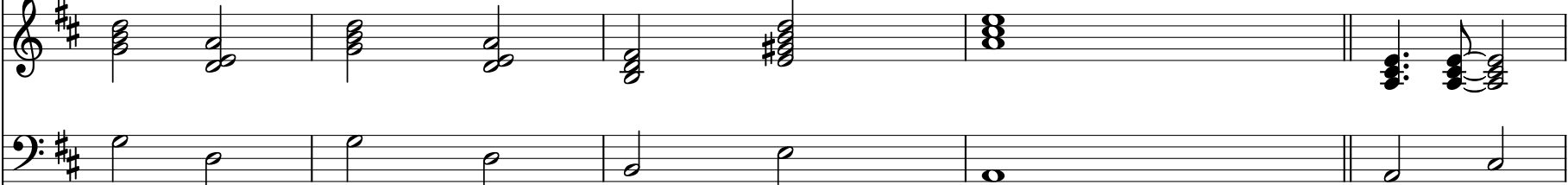
D. Set

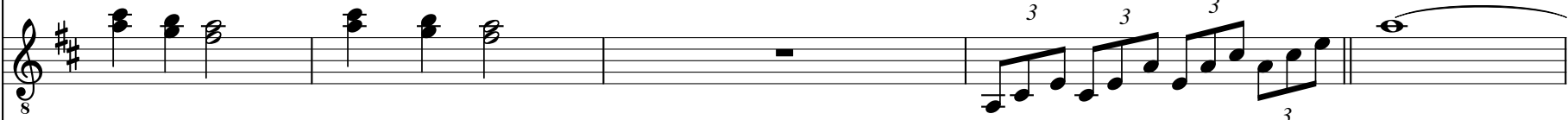


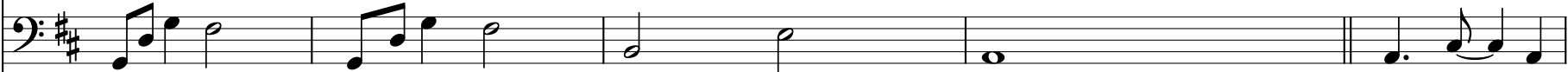
25

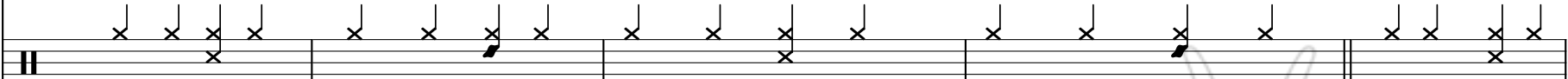
M.  tell us no or whereto go or say we're on - ly dream - ing

W.  a whole new world

Pno.  G Dsus2 G Dsus2 Bm E7 A A A/C#

El. Guit.  3 3 3 3

B. Guit. 

D. Set 



30

M.

W.
a daz-ling place I ne - ver knew but when I'm way up here it's cry-stal clear that now I'm in a

Pno.
D A F#/A# Bm G Dsus2/F# G Dsus2/F# Bm E7

El. Guit.

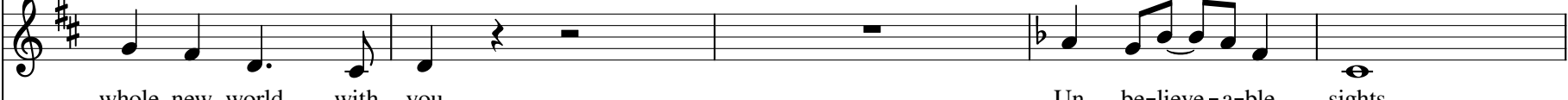
B. Guit.

D. Set

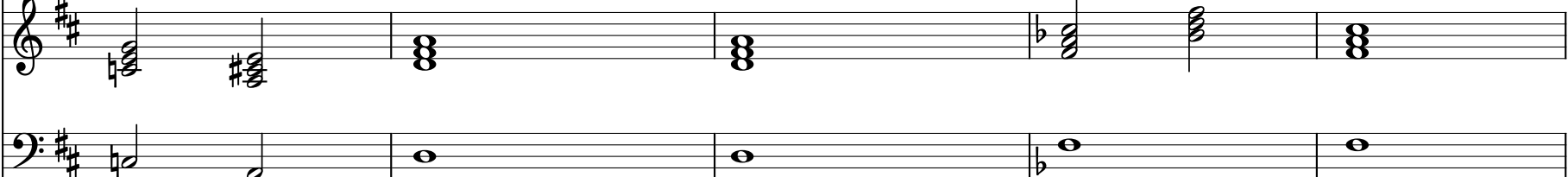


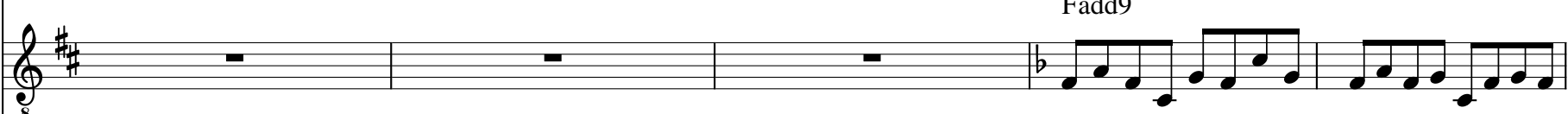
36


M. 
 now I'm in a whole new world with you

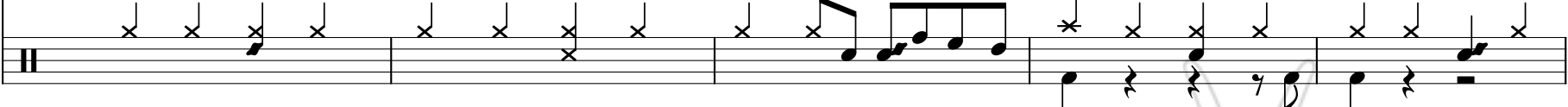
W. 
 whole new world with you Un be-lieve-a-ble sights

C A D D F B \flat /F F

Pno. 

El. Guit. 
 Fadd9

B. Guit. 

D. Set 



M.

W.

In - de scribe-a-ble feel - ings soar - ring tum - bling free wheel - ing through an end - less dai - mond sky

F Bb/F Bb/D C/E Gm/Bb A Dm Dm/C Bb

Pno.

Dm C Gm A

El. Guit.

B. Guit.

D. Set



46

M. Musical staff for M. with lyrics: Don't you dare close your eyes hold your breath it get's bet - ter

W. Musical staff for W. with lyrics: a whole new world a hun-dred - thou - sand things to see I'm like a

Pno. Piano accompaniment with chords: F, C, C/E, F, C, C/E, F

El. Guit. Musical staff for Electric Guitar

B. Guit. Musical staff for Bass Guitar

D. Set Musical staff for Drum Set



M.

W.

Pno.

El. Guit.

B. Guit.

D. Set



57

M. ri - zons to pur - sue I'll chase them a - ny where there's time to spare let me share this

W. e - vry mo - ment get's bet - I'll chase them a - ny where there's time to spare let me share this

Pno. C A/C# Bb Fsus2/A Bb Fsus2/A Dm G7

El. Guit. 8

B. Guit.

D. Set



M. whole new world with you a whole new world that's where we'll be

W. whole new world with you a whole new world that's where we'll

Pno. $B\flat/E\flat$ $B\flat/C$ Dm Dm/C $B\flat$ F/A $B\flat$

El. Guit.

B. Guit.

D. Set



68

M.
 a thrill-ing chase you and me

W.
 be a wond'r-ous place for you and me

Pno.
 F/A B \flat C F F F F

El. Guit.
 8

B. Guit.

D. Set



76

M.

W.

Pno.

El. Guit.

B. Guit.

D. Set

The musical score for measures 76-78 is arranged in six staves. The top two staves, M. and W., contain rests in all three measures. The Pno. part consists of two staves: the upper staff has a complex chord structure with a fermata over the second measure, marked with an 'F', and the lower staff has a bass line with a similar fermata. The El. Guit. part also has two staves, with the upper staff mirroring the Pno. upper staff's complex structure and the lower staff having a bass line with a fermata. The B. Guit. part has a single staff with a bass line and a fermata. The D. Set part has a single staff with three measures of rests.



Vocals

A Whole New World

from Disney's Aladdin

arranged by Brian Roberts

Men $\text{♩} = 125$ $\frac{4}{4}$

W. $\frac{4}{4}$

I can show you the world shin - ing shim-er-ring splen - did

9

M. $\frac{4}{4}$

W. $\frac{4}{4}$

tell me prin - cess now when did you last let your heart de - cide

13

M. $\frac{4}{4}$

W. $\frac{4}{4}$

I can o - pen your eyes Take you won - der by won - der

17

M. $\frac{4}{4}$

W. $\frac{4}{4}$

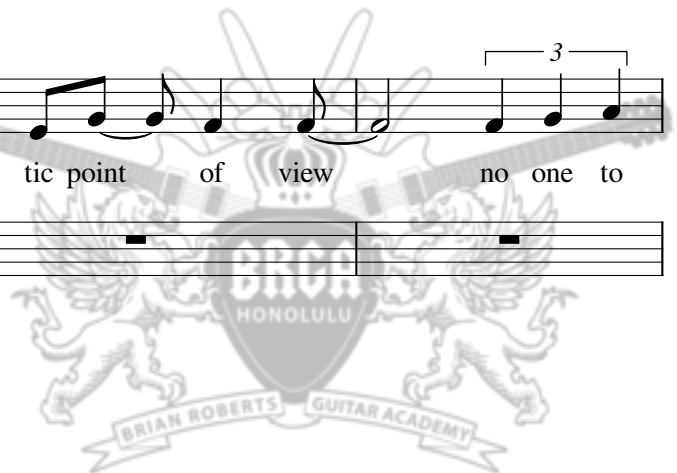
o - ver side - ways and un - der on a ma - gic car - pet ride a whole new

21

M. $\frac{4}{4}$

W. $\frac{4}{4}$

world a new fan - tas - tic point of view no one to

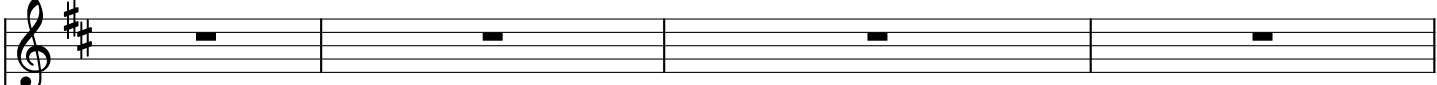



25

M.  tell us no or where to go or say we're on - ly dream - ing

W.  a whole new

29

M. 


W.  world a daz - ling place I ne - ver knew but when I'm

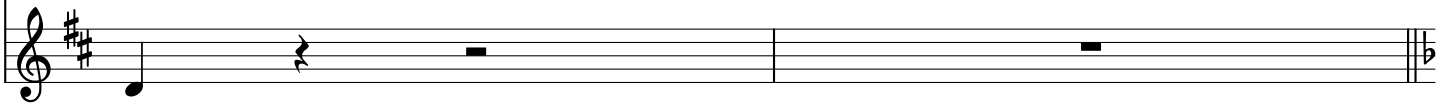
33

M. 


W.  way up here it's cry - stal clear that now I'm in a whole new world with


37

M.  now I'm in a whole new world with you

W.  you


39

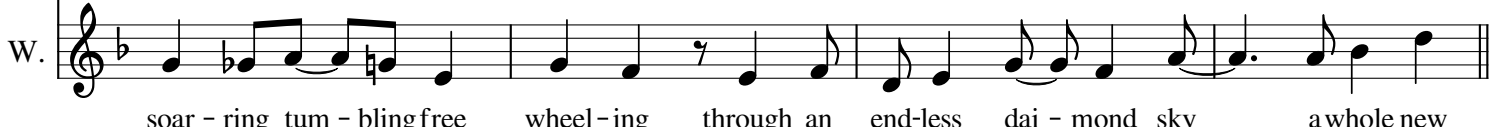
M. 

W.  Un be - lieve - a - ble sights In - de scribe - a - ble feel - ings



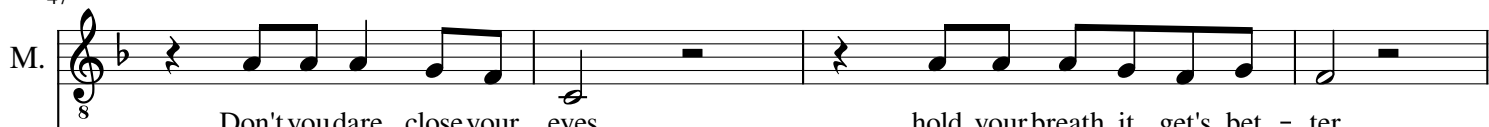
43

M. 


W. 

soar - ring tum - bling free wheel - ing through an end - less dai - mond sky a whole new

47

M. 

Don't you dare close your eyes hold your breath it get's bet - ter

W. 

world a hun - dred - thou - sand things to see I'm like a

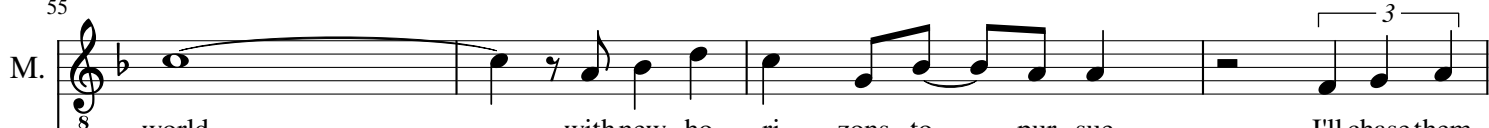
51

M. 

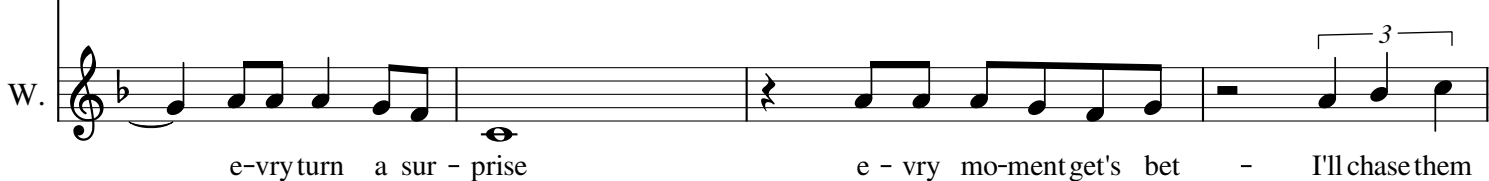
W. 

shoot - ing star I've come so far I can't go back to where I used to be

55


M. 

world with new ho - ri - zons to pur - sue I'll chase them

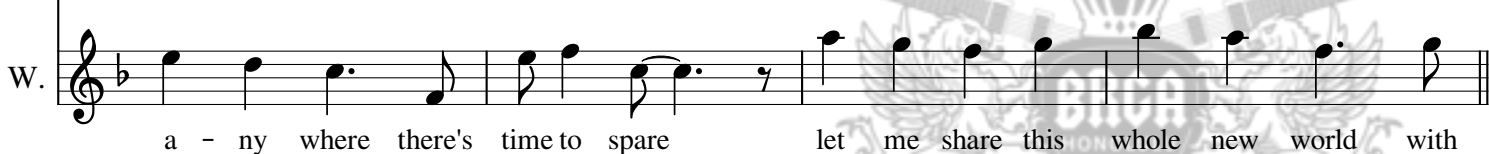
W. 

e - vry turn a sur - prise e - vry mo - ment get's bet - I'll chase them

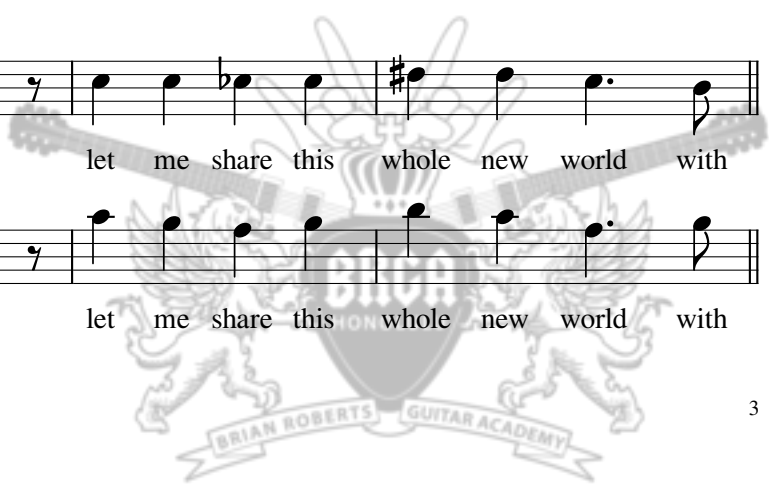
59

M. 

a - ny where there's time to spare let me share this whole new world with

W. 

a - ny where there's time to spare let me share this whole new world with



63

M. you a whole new world that's where we'll

W. you a whole new world

67

M. be a thrill - ing chase

W. that's where we'll be a wond'r - ous place

71

M. you and me

W. for you and me

75

M. 4

W. 4



Keys

A Whole New World

from Disney's Aladdin

arranged by Brian Roberts

♩ = 125

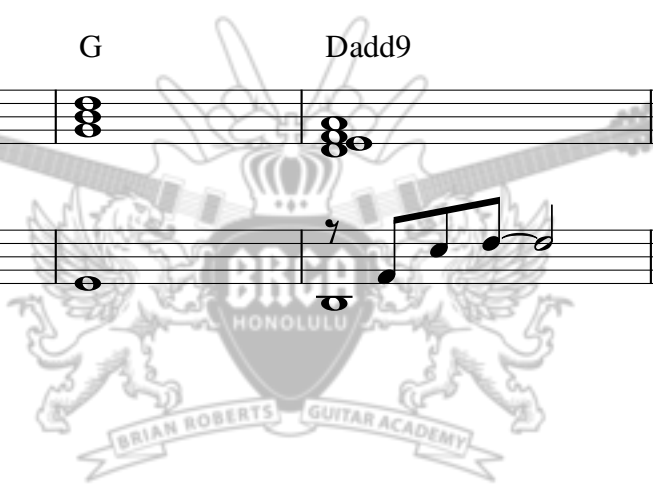
Musical notation for the first system, measures 1-4. The key signature is two sharps (F# and C#) and the time signature is 4/4. The tempo is marked as ♩ = 125. The melody is in the treble clef, and the bass line is in the bass clef. The bass line consists of a steady eighth-note pattern.

Musical notation for the second system, measures 5-8. Chord symbols are placed above the treble staff: Dadd9 (measures 5-6), D (measure 7), GΔ/B (measure 8), and A/C# (measure 8). The melody continues in the treble staff, and the bass line continues with eighth notes.

Musical notation for the third system, measures 9-12. Chord symbols are placed above the treble staff: Em/G (measure 9), F# (measure 9), F#/A# (measure 10), Bm (measure 10), Bm/A (measure 11), and G (measure 11). The melody continues in the treble staff, and the bass line continues with eighth notes.

Musical notation for the fourth system, measures 13-16. Chord symbols are placed above the treble staff: Dadd9 (measures 13-14), D (measure 15), GΔ/B (measure 16), and A/C# (measure 16). The melody continues in the treble staff, and the bass line continues with eighth notes.

Musical notation for the fifth system, measures 17-20. Chord symbols are placed above the treble staff: Em/G (measure 17), F# (measure 17), F#/A# (measure 18), Bm (measure 18), Bm/A (measure 19), G (measure 19), and Dadd9 (measure 20). The melody continues in the treble staff, and the bass line continues with eighth notes.



21 A A/C# D A A7 D

25 G Dsus2 G Dsus2 Bm E7 A

29 A A/C# D A F#/A# Bm

33 G Dsus2/F# G Dsus2/F# Bm E7 C A

37 D D



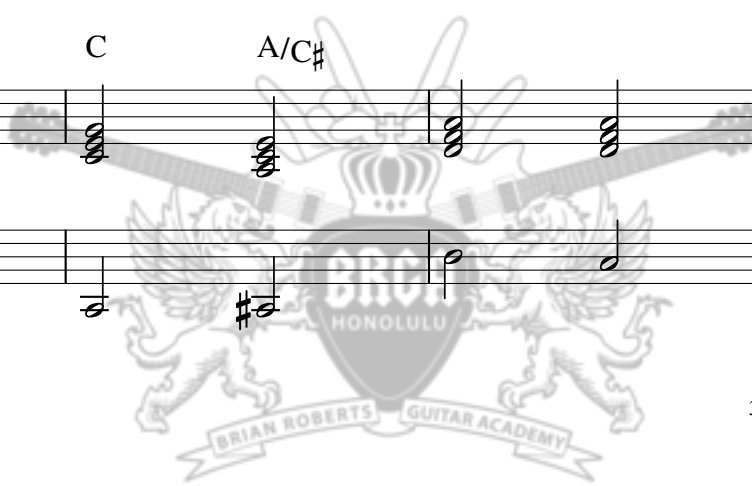
39 F B \flat /F F F B \flat /F B \flat /D C/E

43 Gm/B \flat A Dm Dm/C B \flat F

47 C C/E F C C/E F

51 B \flat F/A B \flat F/A Dm G7 C

55 C C/E F C A/C \sharp



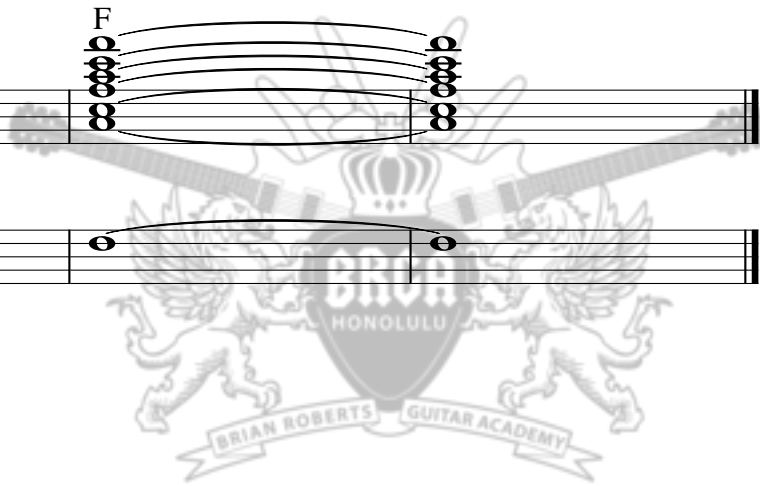
59 B \flat Fsus2/A B \flat Fsus2/A Dm G7 B \flat /E \flat B \flat /C

63 Dm Dm/C B \flat F/A

67 B \flat F/A B \flat C

71 F F F

75 F F



Guitar

A Whole New World

from Disney's Aladdin

arranged by Brian Roberts

♩ = 125

8 Bm A 3

13 D/F# Bm A 4

28 3 3 3 4 Fadd9

40 Dm C Gm A

48 2 2 2

65 5

Detailed description: This is a guitar sheet music page for the song 'A Whole New World' from Disney's Aladdin. It consists of six staves of music. The first staff starts with a tempo marking of quarter note = 125. The key signature has two sharps (F# and C#), and the time signature is 4/4. The music includes various chords such as Bm, A, D/F#, Fadd9, Dm, C, and Gm. There are also technical markings for triplets and doublets. The piece concludes with a final chord and a double bar line.



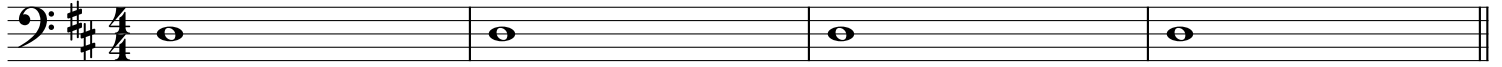
Bass

A Whole New World

from Disney's Aladdin

arranged by Brian Roberts

♩ = 125



5



13



21



29



39



47



55



65



Drums

A Whole New World

from Disney's Aladdin

arranged by Brian Roberts

$\text{♩} = 125$

Drum notation for measures 1-4. The staff shows a 4/4 time signature and includes various drum symbols such as snare, bass drum, and hi-hat.

Drum notation for measures 5-12. Continues the drum pattern with snare, bass drum, and hi-hat symbols.

Drum notation for measures 13-20. Continues the drum pattern with snare, bass drum, and hi-hat symbols.

Drum notation for measures 21-28. Continues the drum pattern with snare, bass drum, and hi-hat symbols.

Drum notation for measures 29-38. Continues the drum pattern with snare, bass drum, and hi-hat symbols.

Drum notation for measures 39-46. Continues the drum pattern with snare, bass drum, and hi-hat symbols.

Drum notation for measures 47-54. Continues the drum pattern with snare, bass drum, and hi-hat symbols.

Drum notation for measures 55-64. Continues the drum pattern with snare, bass drum, and hi-hat symbols.

Drum notation for measures 65-72. Includes a 5-measure rest, a fermata, a double bar line, and a 3-measure rest.

